

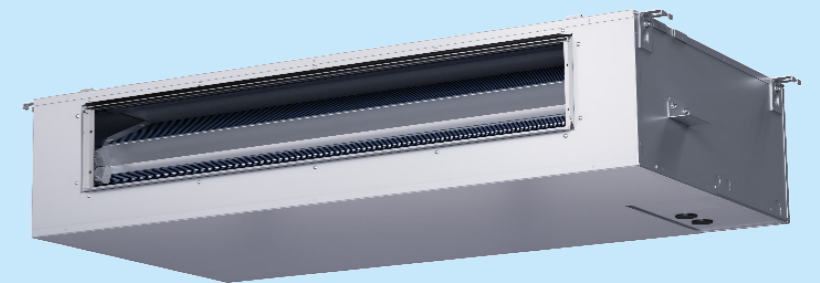


# MPCE Series Ceiling-mount Fan coil Aluminum tubes

1.5-3 Ton

## Standard Features

- ❖ Direct-drive, multi-speed motors allow air volume variation for heating / cooling.
- ❖ - Multi-speed ECM motor/Multi-speed PSC motor available.
- ❖ Thermoplastic drain pan with bottom primary and secondary drain connections.
- ❖ Cased&Uncased models available, suitable for free-return installation.
- ❖ Exquisite design and compact structure allow multiple installation situations.
- ❖ Super slim appearance and structure save installation space.
- ❖ Easy service access.
- ❖ AHRI Certified and ETL Listed.
- ❖ All aluminum coil.



## Midea Building Technologies Division

Add.: Midea Headquarters Building, 6 Midea Avenue, Shunde, Foshan, Guangdong, China

Postal code: 528311

[mbt.midea.com](http://mbt.midea.com) / [global.midea.com](http://global.midea.com) / [tsp.midea.com](http://tsp.midea.com)

Note: Product specifications change from time to time as product improvements and developments are released and may vary from those in this document.



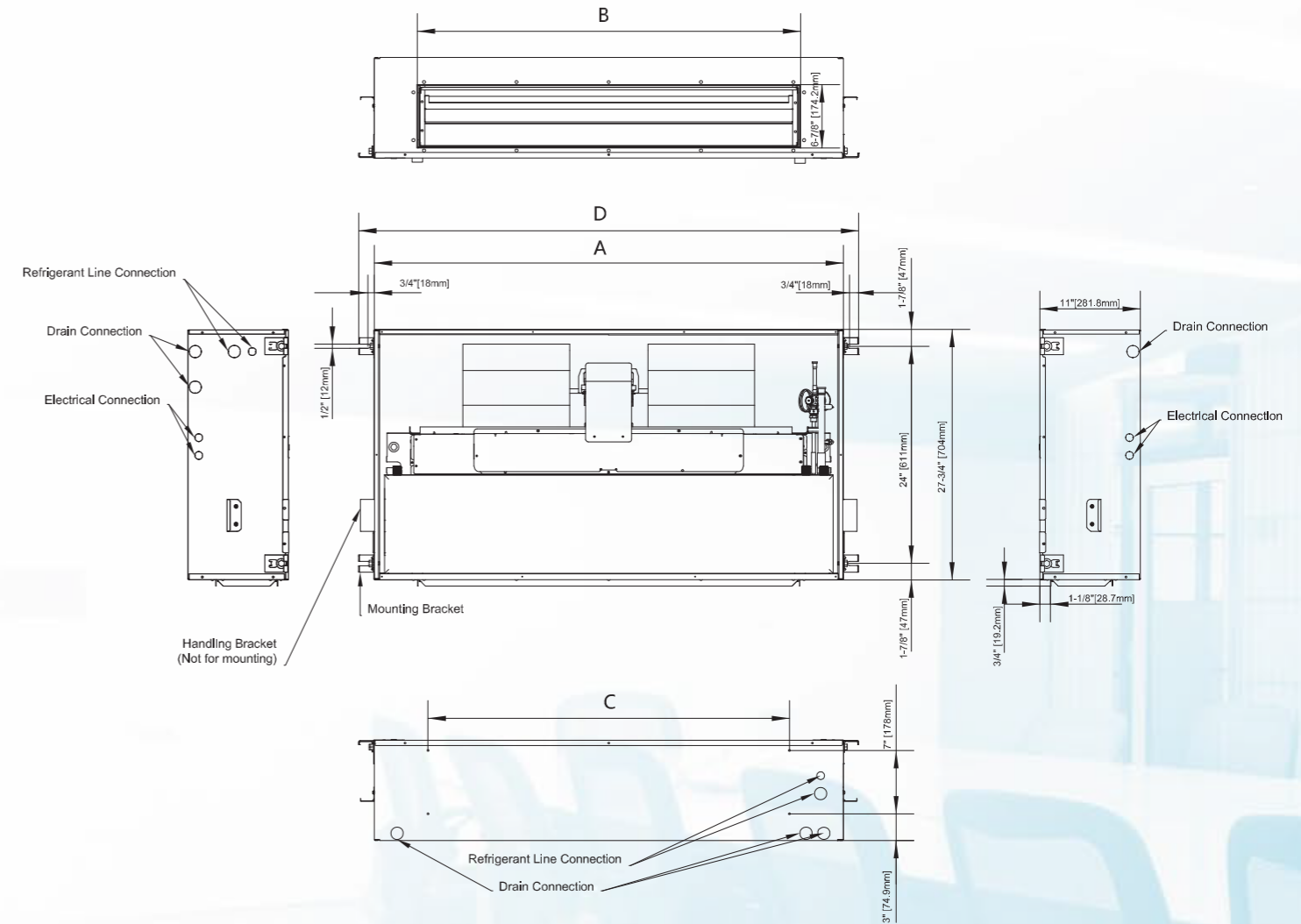
*Midea-Discover Easy Comfort*



## Specifications

Model	MPCE18A1MNITA	MPCE24A1MNITA	MPCE30B1MNITA	MPCE36B1MNITA
<b>NOMINAL CAPACITY</b>				
Cooling (BTU/h)	18,000	24,000	36,000	48,000
External Static Pressure(in.w.g)(Pa)	45	45	60	60
<b>ELECTRICAL DATA</b>				
Voltage / Phase(60Hz)	208/230/1	208/230/1	208/230/1	208/230/1
Min. / Max. Voltage	187/253	187/253	187/253	187/253
Min. Circuit Amps	3.3	3.3	3.3	3.3
Max. Overcurrent Protection	15	15	15	15
<b>FAN MOTOR</b>				
Motor Type	ECM	ECM	ECM	ECM
Capacitor (uF)	/	/	/	/
Horsepower (HP)	1/3	1/3	1/3	1/3
Rated RPM	1050	1050	1050	1050
Full Load Amps (FLA)	2.6	2.6	2.6	2.6
<b>FAN BLOWER</b>				
Material	Metal	Metal	Metal	Metal
Type	Centrifugal	Centrifugal	Centrifugal	Centrifugal
Diameter(in.)	7	7	7	7
Height(in.)	8	8	9	9
<b>EVAPORATOR COIL</b>				
Type	Tube & Fin	Tube & Fin	Tube & Fin	Tube & Fin
Tube Material	Aluminum	Aluminum	Aluminum	Aluminum
Tube Size(in.)	9/32	9/32	9/32	9/32
<b>SOUND POWER (dB)</b>	57	57	54	54
<b>REFRIGERANT CONNECTION SIZE</b>				
Liquid Line Size (O.D.)	3/8	3/8	3/8	3/8
Suction Line Size (O.D.)	3/4	3/4	3/4	3/4

## Dimensions



Model	Dimensions- In.				Unit Operating Weight (lbs.)
	A	B	C	D	
MPCE18A1MNITA	39-3/4	30-3/8	28	43-3/8	110
MPCE24A1MNITA	39-3/4	30-3/8	28	43-3/8	110
MPCE30B1MNITA	51-3/4	42-1/6	40	55-3/8	137
MPCE36B1MNITA	51-3/4	42-1/6	40	55-3/8	137